

FACT SHEET




**HOTEL
METROPOLITAN**
NAGANO JR-EAST

As January 2019



- Since November,1996 March,2015 Renovated
- Total Rooms 235
- Free Wifi

The Hotel Metropolitan Nagano is an excellent choice as a travel base, conveniently located steps away from JR Nagano Station. This urban style hotel provides comfort and ease, serving as a gateway to Shinshu and all of its natural richness.

■ On site restaurants and Bar

We have Japanese cuisine, Chinese cuisine, cafe restaurant, main bar and lobby lounge that can meet customer's request.

Enjoy the unique taste unique to Shinshu, centering on freshest ingredients nurtured by rich nature in Shinshu.

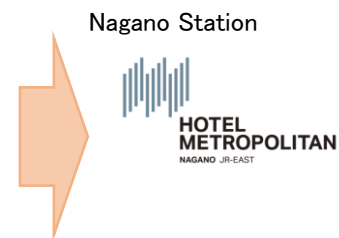
■ Event & Meeting

- Ball room Asama 1000m² Chikuma 320m² Azusa 210m²
- Small size banquet rooms 90m²~120m² Japanese "Tatami" matted banquet room 43.8m²
- Sky banquet room 85m²~150m²



■ Access

- From Tokyo Station By Hokuriku Shinkansen about 1 hour 30 minute
- From Kanazawa Station By Hokuriku Shinkansen about 1 hour 5 minute
- From Nagoya Station By Rapid Express "Shinano" about 3 hours
- From Karuisawa Station By Hokuriku Shinkansen about 30 minute
- From Matsumoto Station By Rapid Express "Shinano" about 45 Minute



【 Car and Bas 】

- From Joshi-netsu Express Way Nagano IC about 25 minute
- From Joshi-netsu Express Way Suzaka Nagano Higashi IC about 25 minute



< Parking >	Passenger Car 120 lots	1,000 JPY per night
	Bus 5 lots	5,000 JPY per night

Standard Single

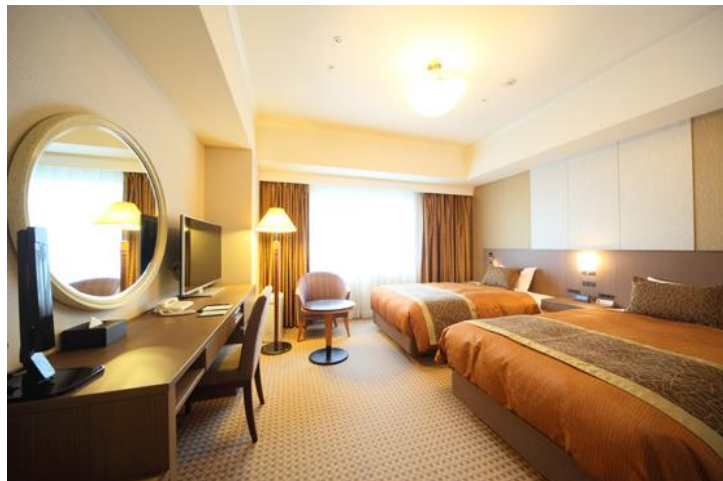
★1 extra bed is available into non smoking room.



Room Detail

Room Size	18m ²	Extrabed	★1 extra bed is available into non smoking room. Extra bed: W100cm x L185cm
Size of Bed	W140cm x L195cm		
Located on	5th, 6th Floor No smoking		
Amenities	TV (cable, satellite, BGM, pay movies, radio),Mini refrigerator,Bathroom phone, Tea bag (green tea), Shampoo/Conditioner/Body soap, Toothbrush set, Razer, Shaving foam, Hair dryer, Nighty, Slippers		
Bathroom	Three-piece bathroom		

Standard Twin



Room Detail

Room Size	25m ²		
Size of Bed	W120cm x L195cm		
Located on	5th, 6th, 7th, 8th and 9th Floor No smoking		
Amenities	TV (cable, satellite, BGM, pay movies, radio),Mini refrigerator,Bathroom phone, Tea bag (green tea), Shampoo/Conditioner/Body soap, Toothbrush set, Razer, Shaving foam, Hair dryer, Nighty, Slippers		
Bathroom	Three-piece bathroom		

Superior Queen

We prepare Simmons's high quality queen size 160 cm bed and you can stay in a room with high quality and calm atmosphere for single or double occupancy.



~Three-piece bathroom~

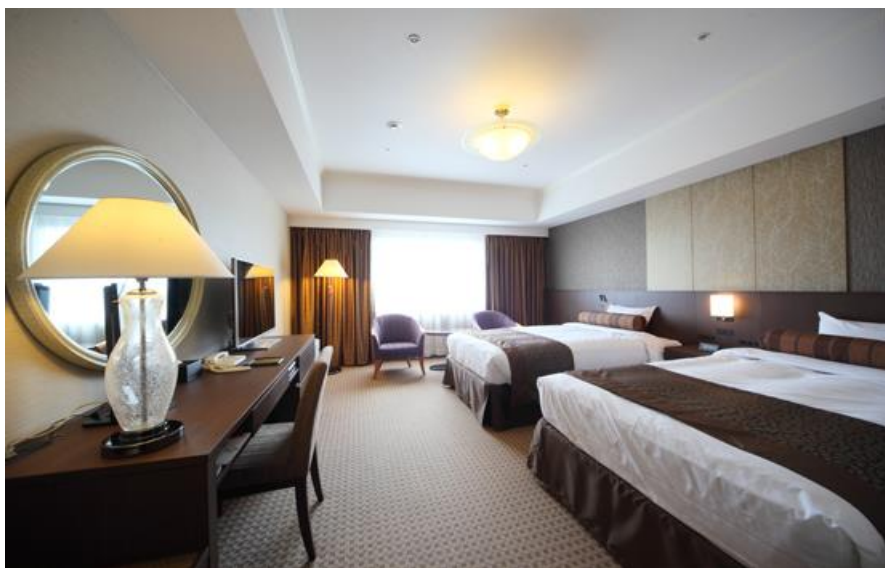


Room Details

Room size	18m ²
Size of Bed	W160cm x L 195cm
Located on	7th and 8th Floor No smoking
Amenities	TV (cable, satellite, BGM, pay movies, radio),Mini refrigerator,Bathroom phone, Tea bag (green tea), Shampoo/Conditioner/Body soap, Toothbrush set, Razer, Shaving foam, Hair dryer, Nighty, Slippers
Bathroom	Three-piece bathroom

Superior Twin

We prepared a 120 cm high-quality bed made by Simmons. Spacious space of 30 m² can be relaxed even for customers with lots of baggage. You can also enjoy a train view of Shinkansen and conventional lines arriving and departing from Nagano Station.



~With an extra bed~



Room Details

Room Size	30m ²	Extrabed	★1 extra bed is available into room. Extra bed: W 100cm x L 185cm
Size of Bed	W120cm x L195cm		
Located on	5th, 6th, 7th, 8th and 9th Floor No smoking		
Amenities	TV (cable, satellite, BGM, pay movies, radio),Mini refrigerator,Bathroom phone, Tea bag (green tea), Shampoo/Conditioner/Body soap, Toothbrush set, Razer, Shaving foam, Hair dryer, Nighty, Slippers		
Bathroom	Three-piece bathroom		

Deluxe Twin

Comfortable space to heal tiredness of travel.

Located on the high floor executive floor, we adopted a highly repulsive bed mattress and pursued a sleep.

It is a space that you can use as a Hollywood twin and be pleased even by a small child.

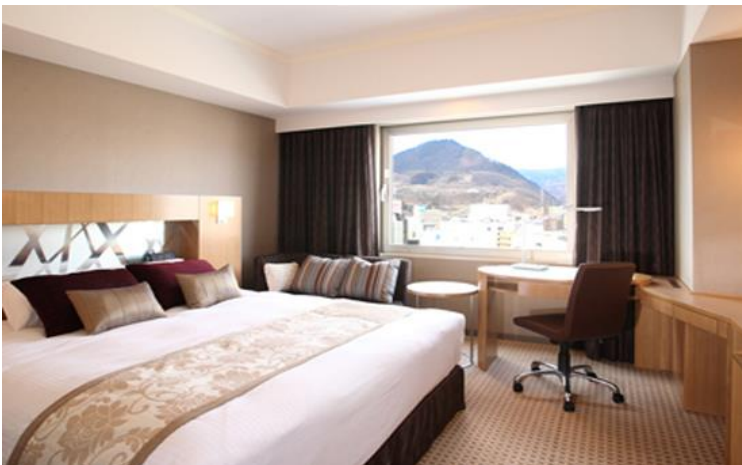


Room Details

Room size	30m ²
Size of Bed	W120cm x L 195cm
Located on	10th Floor (No smoking), 11th Floor (Smoking)
Amenities	TV (cable, satellite, BGM, pay movies, radio),Mini refrigerator,Bathroom phone, Tea bag (green tea), Shampoo/Conditioner/Body soap, Toothbrush set, Razer, Shaving foam, Hair dryer, Nighty, Slippers
Bathroom	Three-piece bathroom

Deluxe Double

Located on the Executive Floor on the higher floor, I designed a living room as a concept. We prepared a 180 cm wide Simmons king size bed. Offering a moment of Shinshu unforgettable in a luxurious space.



Room Details

Room Size	25m ²
Size of Bed	W180cm x L 195cm
Located on	9th and 10th Floor (No smoking), 11th Floor (Smoking)
Amenities	TV (cable, satellite, BGM, pay movies, radio),Mini refrigerator,Bathroom phone, Tea bag (green tea), Shampoo/Conditioner/Body soap, Toothbrush set, Razer, Shaving foam, Hair dryer, Nighty, Slippers
Bathroom	Three-piece bathroom

Corner Twin

Boasting a spacious area of 40 m², this room combines a sense of privacy. Bathroom and powder room are divided, so you can have a pleasant stay.



Room Detail

Room size	40m ²
Size of Bed	W120cm x L 195cm
Located on	5th, 6th, 7th, 8th Floor No smoking
Amenities	TV (cable, satellite, BGM, pay movies, radio),Mini refrigerator,Bathroom phone, Tea bag (green tea), Shampoo/Conditioner/Body soap, Toothbrush set, Razer, Shaving foam,Hair dryer, Nighty, Slippers
Bathroom	Bathroom and powder room are divided

Corner suite

Spacious room of 60 m², with wide sofa for living room. Bathroom is large, too and we have large bathtub and it is space to heal tired of traveling.



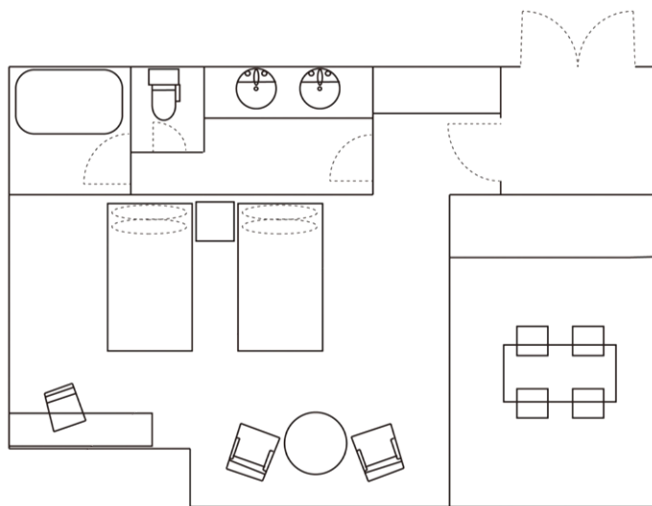
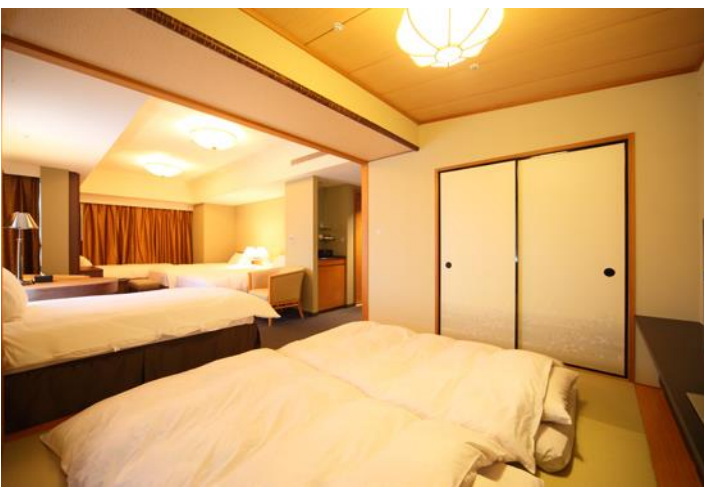
Room Detail

Room size	60m ²
Size of Bed	W120cm x L 203cm
Located on	9th Floor,10th Floor No smoking
Amenities	TV (cable, satellite, BGM, pay movies, radio),Mini refrigerator,Bathroom phone, Tea bag (green tea), Shampoo/Conditioner/Body soap, Toothbrush set, Razer, Shaving foam, Hair dryer, Nighty, Slippers
Bathroom	Japanese style bathroom

Japanese-Western Suite

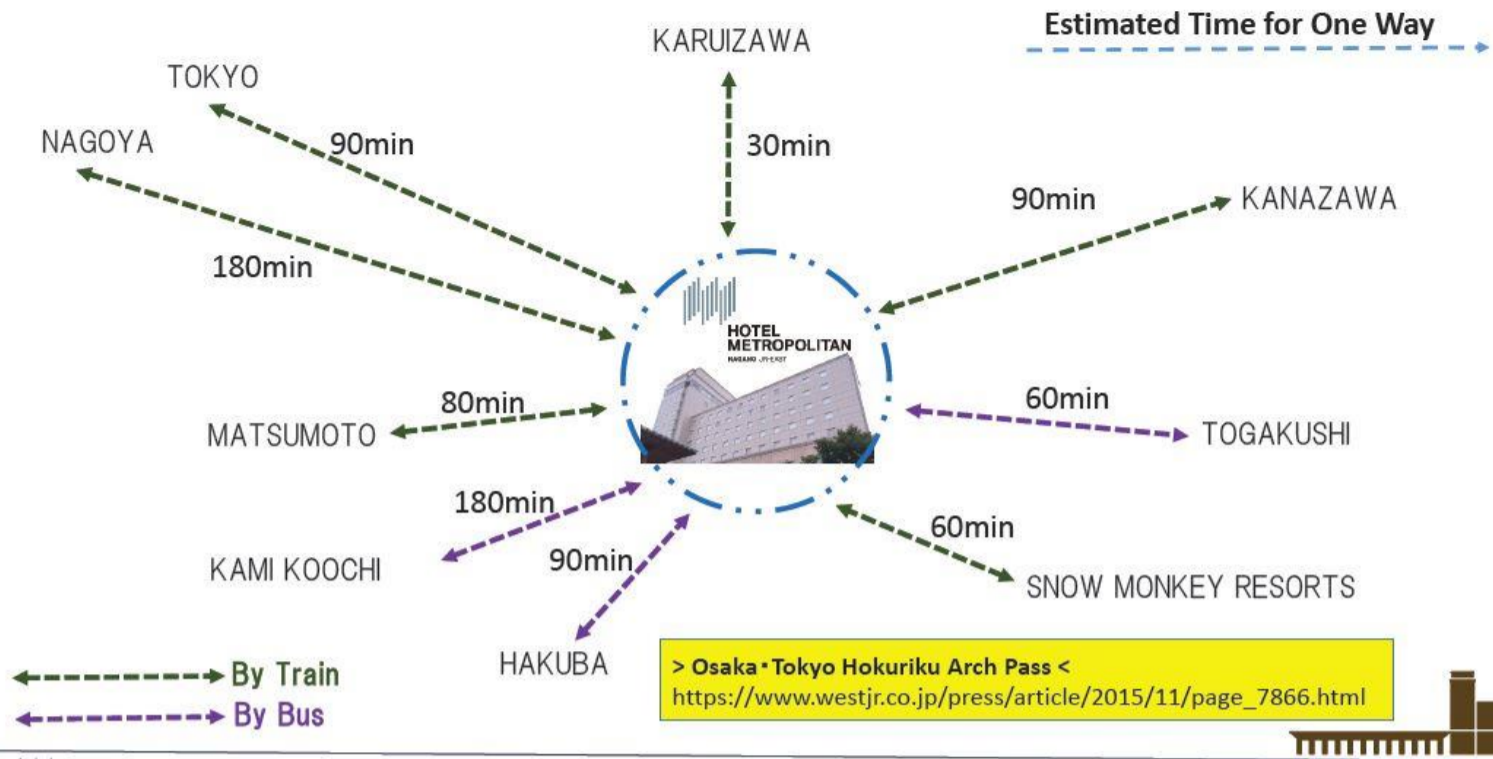
The spacious 60 m² room has a bedroom and tatami floor space.

This room is available for a maximum of 6 people and is the perfect room for your family or a group of large numbers.



Room Detail

Room Size	60m ²
Size of Bed	W120cm x L195cm 2 single beds, 2 futon beds & 2 bunk beds (100 x 185)
Located on	5th, 6th, 7th, 8th Floor No smoking
Amenities	TV (cable, satellite, BGM, pay movies, radio), Mini refrigerator, Bathroom phone, Tea bag (green tea), Shampoo/Conditioner/Body soap, Toothbrush set, Razer, Shaving foam, Hair dryer, Nighty, Slippers
Bathroom	Japanese style bathroom



HOTEL METROPOLITAN HAKUBA JR-EAST

LUGGAGE-FREE TRAVEL

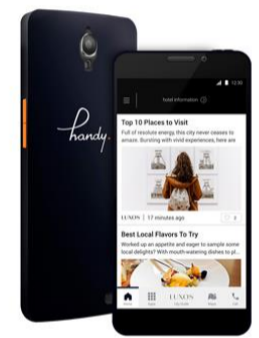
Airport

Hotel A → Hotel B

Half the hassle, double the fun
 Make your journey through Japan more convenient

CLICK HERE TO BOOK ONLINE

handy.



handy is a free smartphone placed in the hotel's guest room. Taking handy in hand, we will offer you a lot of pleasure to make the memories of the journey rich. Guests staying in Japan for free during their stay, Some international calls, internet etc. can be used freely. It supports multiple languages, including Japanese, English, and 31 world languages.

WELCOME TO JAPAN!

MONEY EXCHANGE

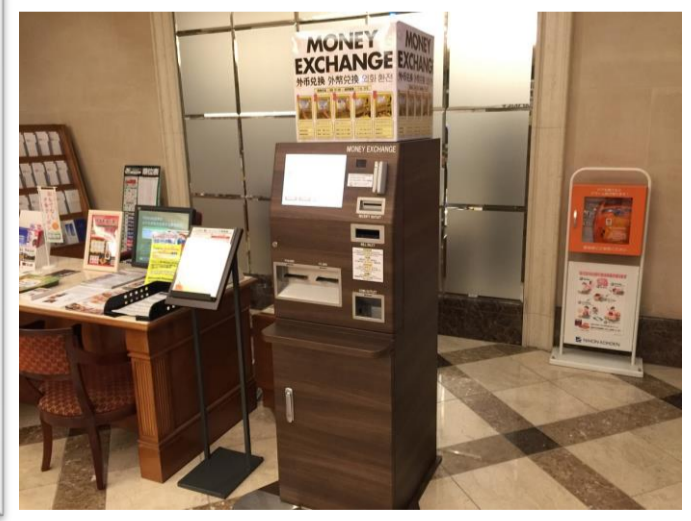
在前台设有外币兑换机
 외화 환전기가 있습니다.

12 currencies. 12货币
 12가지 통화

MONEY EXCHANGE

MONEY EXCHANGE

Open 24 hours in the hotel lobby



Japanese Restaurant Shinano

We prepare Japanese cuisine with seasonal ingredients of Shinshu region (Nagano).



Private rooms are also available



Sushi
"Kaidu"

It strives to who can eat feel free to fun a full-fledged Edo-style sushi. Please Come savor, including seasonal fish the commitment material of the taste.



Operating Hour

Lunch 11:30~14:30

Diner 17:30~21:30 (LO. 21:00)



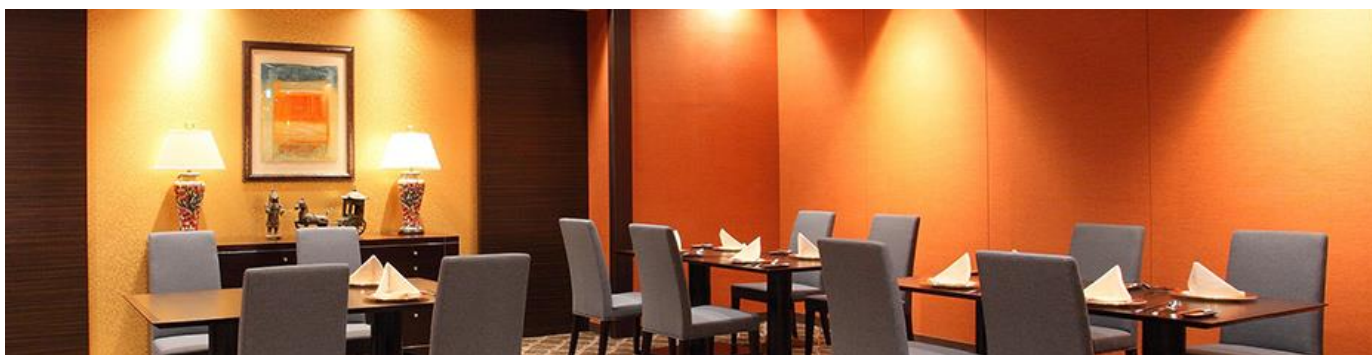
Teppan Yaki
"Yamasachi"

Inheriting the taste of beef, of Shinshu Alps cow who grew up in the wilderness of Shinshu. The fine-grained flesh and deep some taste, authentic Teppanyaki, please relished by all means.



Chinese Restaurant Fan-Fahr

Chinese Restaurant Fan-Fahr restaurant featuring dishes completely based on Sichuan cuisine. You can enjoy genuine Chinese cuisine which took in the technique of Hong Kong and Shanghai.



Operating Hour

Lunch 11:30~14:30

Diner 17:30~21:30 (LO. 21:00)

Private rooms are also available



Cafe Restaurant Iris

We offer a wide range of menus from breakfast to reasonable lunch and dinner. Feel free to enjoy the taste of the hotel. For breakfast, we prepare a wide range of dishes such as dishes using local Nagano ingredients and traditional Shinshu cuisine for rice from Nagano prefecture.



Iris
アイリス

【Operating Hour】

Breakfast	6:30~10:00	Buffet Style
Lunch	11:00~14:30 (LO 14:00)	Buffet Style
Dinner	17:30~21:00 (LO 20:00)	Buffet Style

Bar Apollo

It is the main bar located on the top floor of the hotel. The bartender boasts outstanding skills, we will offer you the best one for our customers from among about 200 rich drink menus. The night view of one of Nagano area's favorite areas overlooking the mood with a bar counter and table seat adds flowers to a wonderful cocktail time.



MAIN BAR
APOLLO

【Operation Hour】

18:30~24:00 (LO. 23:30)
Close on Sunday

